

IDOC COCKPIT – SOLUTION OVERVIEW

This document provides an overview of the functionality and benefits of using the IDoc Cockpit solution to manage system IDocs in the SAP® Business Suite

Joint Consulting, Inc.

Contents

I. The Joint Consulting Difference	2
II. Introduction to the IDoc Cockpit.....	3
III. IDoc Cockpit Key Capabilities and Benefits.....	4
IV. IDoc Cockpit Solution Components	5
V. Learn more about the JCI Suite of Applications.....	11

I. The Joint Consulting Difference

Joint Consulting is comprised of top-level business and technical experts who design all of Joint products with the following guiding principles:

User Experience – At Joint Consulting we know that a product needs to be powerful yet easy to learn and use. An ERP system is often implemented to provide enterprise level benefits but often fails to deliver those benefits at the lower levels of the organization that transact the day to day business scenarios. Many times transaction processing can be more work intensive after the ERP is implemented. At Joint Consulting, the user experience is always a key factor that is considered throughout the design and development process.

Standardization through Flexibility – A major benefit of an ERP system is that it seeks to drive the standardization of processes across an organization. This goal is not always realized because it fails to consider that different businesses do not all function the same way, nor do business units within a business. All too often, the end result is that multiple “point solutions” get developed and business process work-arounds proliferate. The result is a solution that is complex, inefficient, and costly to maintain. One of the goals at Joint Consulting is to provide solutions that are flexible enough to be used as a global solution. When used in this manner, Joint Consulting products provide one complete solution around which processes can be standardized.

Innovation – At Joint Consulting we believe in the power and value added proposition of the SAP solution. We never look to replace or undermine the functionality that SAP provides. We endeavor to design solutions that take what is already great about SAP and build on top of it. In doing so we strive to imagine and produce solutions that help business realize the full potential of their SAP investment while unlocking trapped costs through the standardization of process, development and training.

Deliver a Complete Solution – At Joint Consulting we acknowledge that a technical piece of functionality is not a solution. A solution must address the business process, training, security / authorizations, documentation and reporting. These aspects are always considered. Sample template programs are often included. When you implement a Joint Consulting solution, you are implementing a solution and not just a starting point.

Reusability – When a company buys a solution it is a strategic asset that should be able to be leveraged into the future. At Joint Consulting we take a modular approach to building our solutions. They reside in SAP and therefore can be leveraged by other SAP programs and processes. We do this so customers can standardize their development in certain key areas so that a new solution does not have to be developed every time there is a new requirement. This reduces future development time

as well as reducing the complexity of the solution. All of the Joint Consulting suite of products shares common components that allow these products to seamlessly integrate with each other.

Automation – Joint Consulting believes in unlocking trapped costs within business processes. To this end many of the solutions provided enable systematic automation of processes whereas business users only need to manage the exceptions. Automation, when possible, frees-up human capital to focus on more value-added tasks and leaves the repetitive actions to the system.

II. Introduction to the IDoc Cockpit

In SAP, an IDoc or Intermediate Document is a standard vehicle used for data transfer between two application programs in SAP or between SAP and an external system. The structure of the IDoc necessitates a complex understanding of its tables and segments in order to interpret the data that is stored in the IDoc. A series of segments and qualifiers must be evaluated against a mapping document in order to understand the business meaning of the data. Although IDoc processing comes with many tools, searching for IDocs and interpreting its contents contain many challenges. For example in a standard IDoc transaction like WE02 you cannot search for the contents of an IDoc you can only search for higher level attributes like status. If you wanted to search for a missing IDoc based on specific business data criteria like PO number, you would not be able to do so.

IDoc Cockpit is an enterprise solution that provides a business friendly methodology of searching and viewing IDocs and their contents. IDoc Cockpit allows an organization to locate and manage IDocs with an increased efficiency. IDoc Cockpit allows for searching IDocs by their content, not just their higher level attributes. Once the IDoc is located, IDoc Cockpit allows the organization to display the IDoc data in a business friendly manner, using business terms such as PO Number and Material Number. A view of IDoc data can be created and maintained to display and group the contents of an IDoc based on the message type.

IDoc Cockpit was not designed to replace standard SAP IDoc functionality. IDoc Cockpit was designed to augment it by providing the missing components of otherwise great and stable functionality. IDoc Cockpit brings the efficiency and ease of use to searching, identifying and managing SAP IDocs.

III. IDoc Cockpit Key Capabilities and Benefits

The following are the key capabilities and benefits using when using IDoc Cockpit:

Search IDocs by Content – It is often necessary to locate IDocs based on their content, not just their status, date and type. The standard IDoc List functionality does not have the capability to do this. If for example you needed to identify all IDocs that were received in a specified time period for a specific PO Number this would not be possible with the standard IDoc List. A user would have to select a large data set of IDocs based on very high level criteria and then have to drill into each IDoc down to the correct segment and qualifier to determine if it is the IDoc they are trying to locate. This searching process is greatly simplified with the advanced capabilities of IDoc Cockpit which allows for a content based search. In other words the IDoc search criteria can be IDoc content data such as PO number. This capability makes locating specific IDocs very simple and efficient.

IDoc Tree Descriptions – When viewing an IDoc with a standard SAP transaction you are confronted with a cryptic view of tree segments with tables that contain technical names. This means that an understanding of the technical structure is required to be able to interpret its contents. IDoc Cockpit extends the view of the stand IDoc structure to show not only the technical names but also the description.

IDoc Tree Description Customization – Even with the IDoc description available, knowledge of what data and qualifiers are mapped to an IDoc message type is needed in order to understand the IDoc contents. IDoc Cockpit allows custom descriptions to be created by qualified segment that accurately describes the contents of the structure using business friendly terms such as PO Number or Material Number. These custom labels are applied and stored based on the message type of the IDoc.

IDoc Data Grouping – The segment and underlying table method that an IDoc employs to store and transmit data may be useful from a systems perspective, however it is not an ideal way for a user to view the data. IDoc Cockpit allows for a tabular spreadsheet view of the IDoc data using business friendly descriptions organized into Header, Item and Partner data. This is how a user views and interprets business transactions in SAP. The user now has the same capability of viewing the IDoc data that created the business transaction.

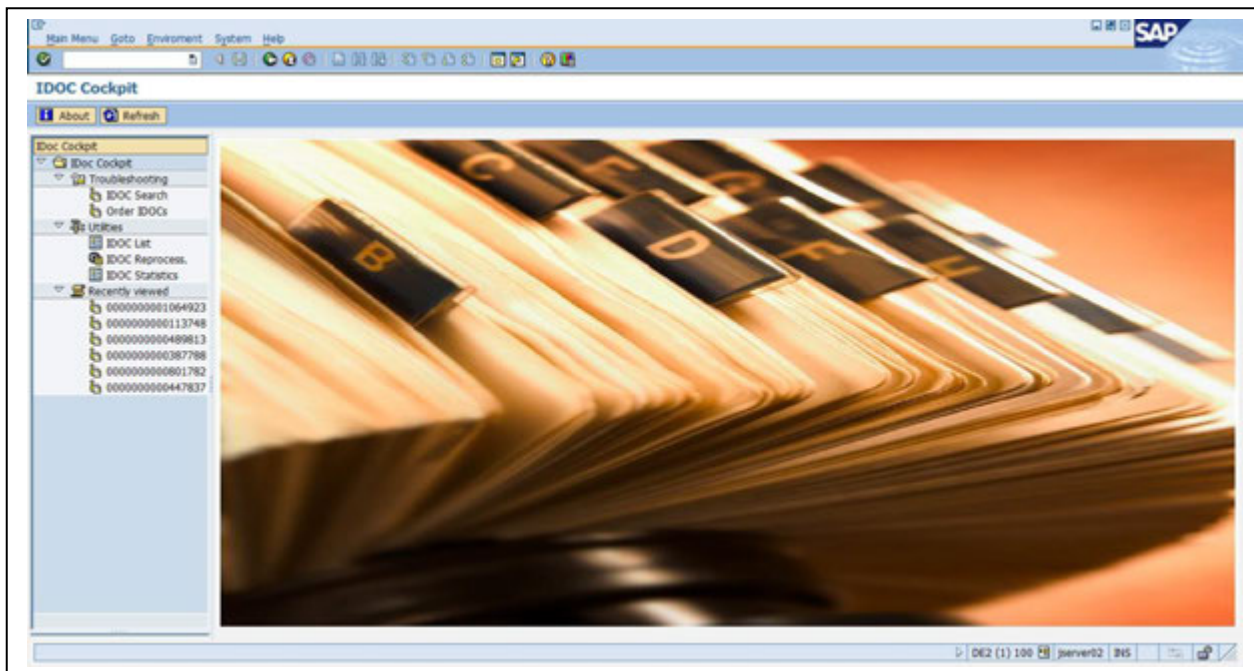
Ease of Implementation – IDoc Cockpit is a complete solution that provides the IDoc Cockpit transaction and supporting components, authorization objects and management programs that make it a turn-key solution. IDoc Cockpit is installed directly in SAP and appears as another transaction to the user.

IV. IDoc Cockpit Solution Components

IDoc Cockpit – The IDoc Cockpit is the core of the solution. This highly intuitive console provides the user interface for:

- **IDoc Searching**
- **IDoc Display**
- **IDoc Data Grouping / Customization**
- **Bridge to other IDoc process related transactions**

Example Screenshot of IDoc Cockpit:



IDoc Searching



IDoc Cockpit has the ability to search by IDoc content. Here is one example although additional selections can be easily added to search on any qualified segment in an IDoc.

The screenshot shows the SAP IDoc Cockpit interface. The top window displays the search criteria configuration, and the bottom window displays the search results.

Search Criteria:

- Man Selection Criteria:
 - Sales Order Number: [] to []
 - Customer PO Number: [] to []
 - Created on: [] to []
- IDoc Status:
 - All IDOCs
 - Enqueued IDOCs
 - Successful IDOCs

Search Results - Sales Order IDOC Search - Result

IDoc number	Rel	S	IDoc Type	Q	Port	P	Partno.	Created on	Time	Message Type	Basic type	Address	S	S
387788	46C	03		1	A0000000	LS	BUYER188	10/11/2000	11:02:06	ORDERS	ORDERS05			
407449	46C	03		1	A0000000	LS	BUYER188	12/21/2000	14:59:54	ORDERS	ORDERS05			
407452	46C	03		1	A0000000	LS	BUYER188	12/21/2000	15:21:58	ORDERS	ORDERS05			
407469	46C	03		1	A0000000	LS	BUYER188	12/22/2000	10:43:04	ORDERS	ORDERS05			
414840	46C	03		1	A0000000	LS	BUYER188	01/30/2001	14:51:18	ORDERS	ORDERS05			
430040	46C	03		1	A0000000	LS	BUYER188	04/06/2001	14:08:28	ORDERS	ORDERS05			
430042	46C	03		1	A0000000	LS	BUYER188	04/06/2001	15:35:13	ORDERS	ORDERS05			
430043	46C	03		1	A0000000	LS	BUYER188	04/06/2001	15:45:41	ORDERS	ORDERS05			
430747	46C	03		1	A0000000	LS	BUYER188	04/09/2001	12:44:03	ORDERS	ORDERS05			
430749	46C	03		1	A0000000	LS	BUYER188	04/09/2001	14:23:37	ORDERS	ORDERS05			
434868	46C	03		1	A0000000	LS	BUYER188	05/08/2001	11:16:07	ORDERS	ORDERS05			
444790	46C	03		1	A0000000	LS	BUYER188	07/16/2001	15:15:37	ORDERS	ORDERS05			
444825	46C	03		1	A0000000	LS	BUYER188	07/17/2001	09:44:56	ORDERS	ORDERS05			
447837	46C	03		1	A0000000	LS	BUYER188	08/07/2001	15:59:39	ORDERS	ORDERS05			
459014	46C	03		1	A0000000	LS	BUYER188	10/11/2001	17:11:14	ORDERS	ORDERS05			
459020	46C	03		1	A0000000	LS	BUYER188	10/11/2001	17:57:24	ORDERS	ORDERS05			
482755	46C	03		1	A0000000	LS	BUYER188	03/04/2002	16:34:35	ORDERS	ORDERS05			
489813	46C	03		1	A0000000	LS	BUYER188	04/12/2002	13:44:29	ORDERS	ORDERS05			
489814	46C	03		1	A0000000	LS	BUYER188	04/12/2002	13:44:29	ORDERS	ORDERS05			
501903	46C	03		1	A0000000	LS	BUYER188	06/14/2002	14:37:01	ORDERS	ORDERS05			
596424	620	56		2	SAPOES	LS	DE2CNT1	12/12/2003	17:33:46	ORDERS	ORDERS05			
638936	640	03		1	XL_80_800	LI	US-VENT	09/15/2004	18:25:55	ORDERS	ORDERS05			
801759	700	53		2	SAPD3	LS	DE2CNT1	10/18/2007	08:27:05	ORDERS	ORDERS05			
801782	700	43		2	SAPD1	LS	DE2CNT1	10/18/2007	20:34:47	ORDERS	ORDERS05			

IDoc Display

The **Full Segment View** lists all of the segments of an IDoc.



In the Full Segment view of the IDoc we can see a layout of not only the fields and qualifiers but also the actual descriptions.



Tip – Qualified segments can be given custom descriptions in IDoc Cockpit. They can also be grouped together based on a grouping indicator such as Header, Item and Partner.

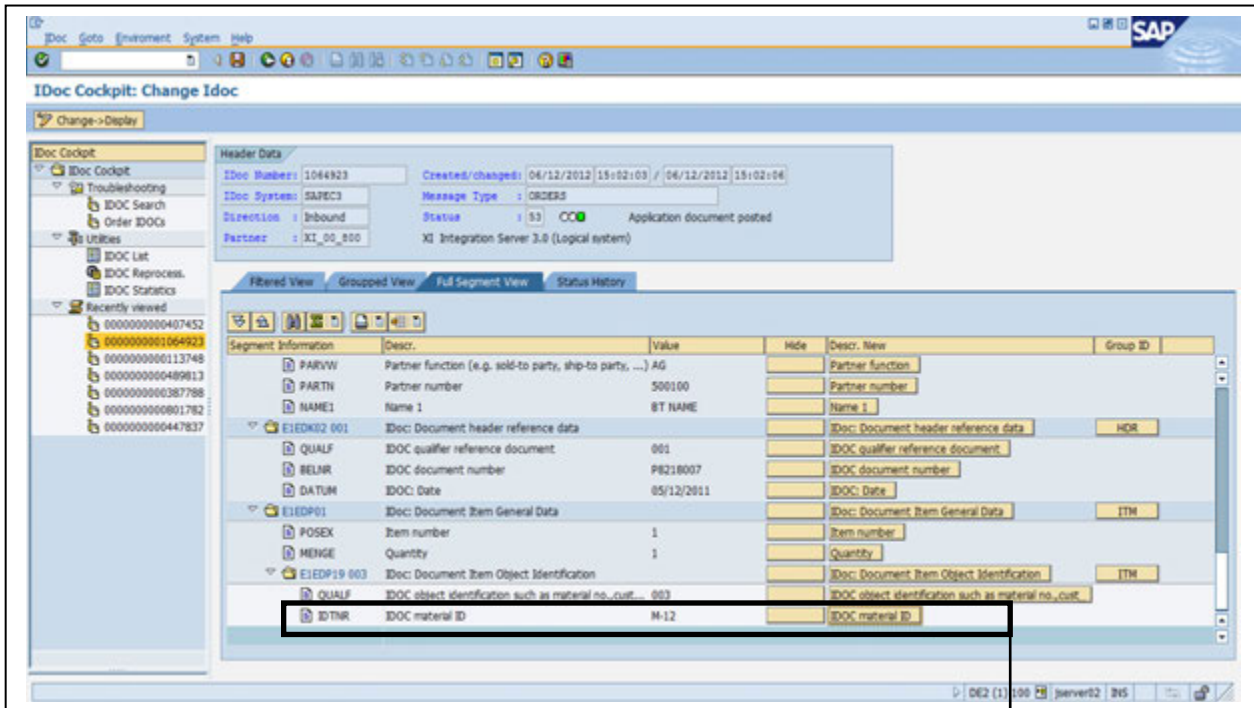
Segment Information	Descr.	Value	Hide	Descr. New	Group ID
E1EDK01	IDoc: Document header general data			IDoc: Document header general data	HDR
ACTION	Action code for the whole EDI message	000	X	Action code for the whole EDI message	
CURCY	Currency	EUR		Currency	
BELNR	IDoc document number	P8218007		PO Number	
E1EDK14-014	IDoc: Document Header Organizational Data			IDoc: Document Header: Organizational Data	HDR
QUALF	IDoc qualifier organization	014		IDoc qualifier organization	
ORGD	IDoc organization	Z8DP		IDoc organization	
E1EDK14-009	IDoc: Document Header Organizational Data			IDoc: Document Header: Organizational Data	HDR
QUALF	IDoc qualifier organization	009		IDoc qualifier organization	
ORGD	IDoc organization	001		IDoc organization	
E1EDK14-011	IDoc: Document Header Organizational Data			IDoc: Document Header: Organizational Data	HDR
QUALF	IDoc qualifier organization	011		IDoc qualifier organization	
ORGD	IDoc organization	0001		IDoc organization	
E1EDK14-008	IDoc: Document Header Organizational Data			IDoc: Document Header: Organizational Data	HDR
QUALF	IDoc qualifier organization	008		IDoc qualifier organization	
ORGD	IDoc organization	3000		IDoc organization	

In Change Mode of the Full Segment View, custom descriptions, grouping and hiding segments can be set up.

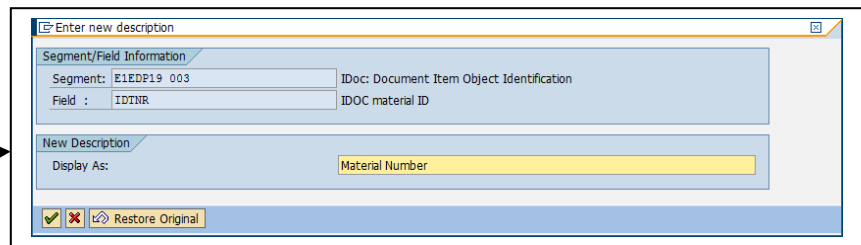
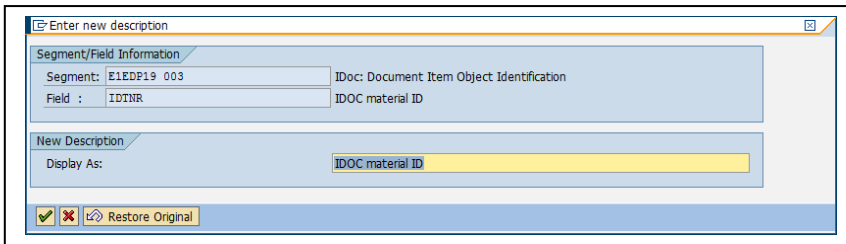



Changes made to the view will be applied at the Message Type level.

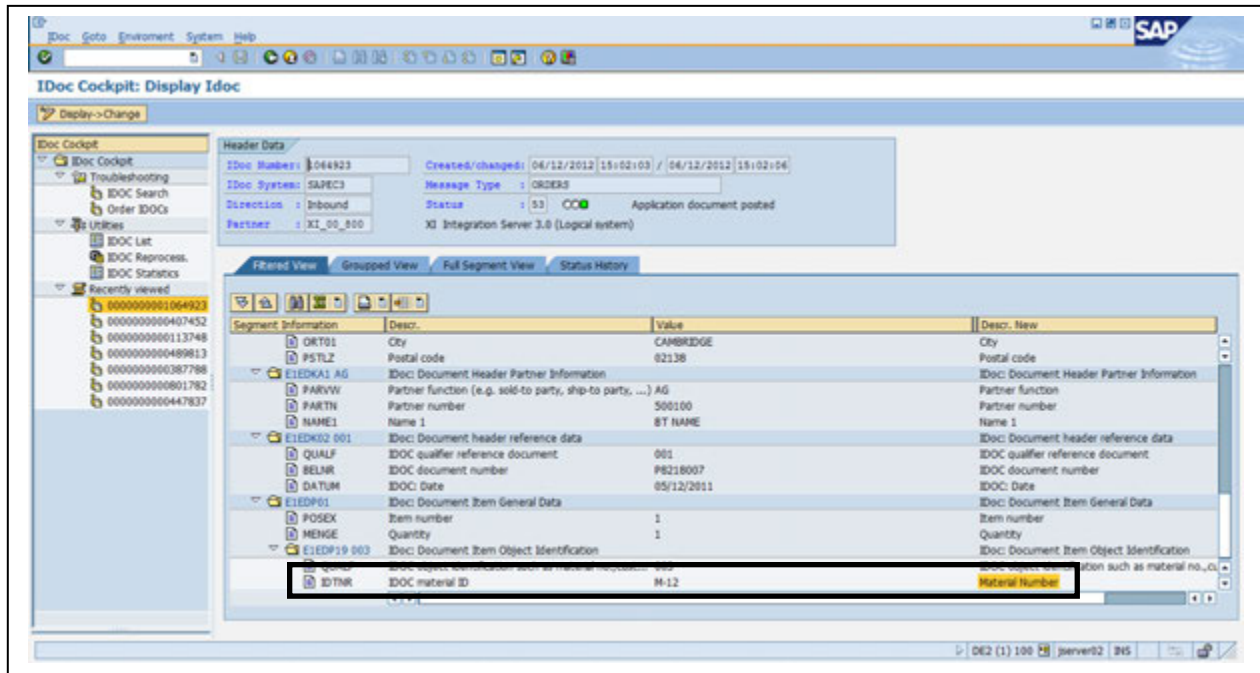
Full Segment View in change mode where customizations to the view of data can be made.




Example: Change the description of IDOC material ID to Material Number

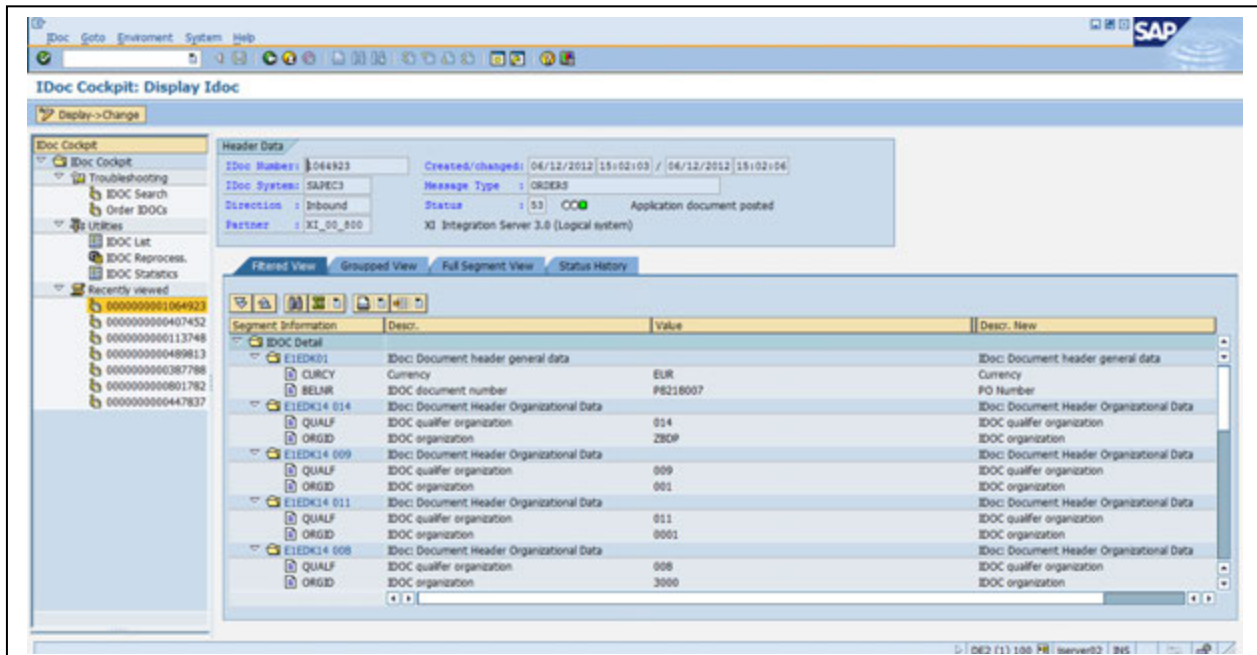


 Tip – When modifying the description, it is field New Description that is being modified. You can see both the original and new description for every node.

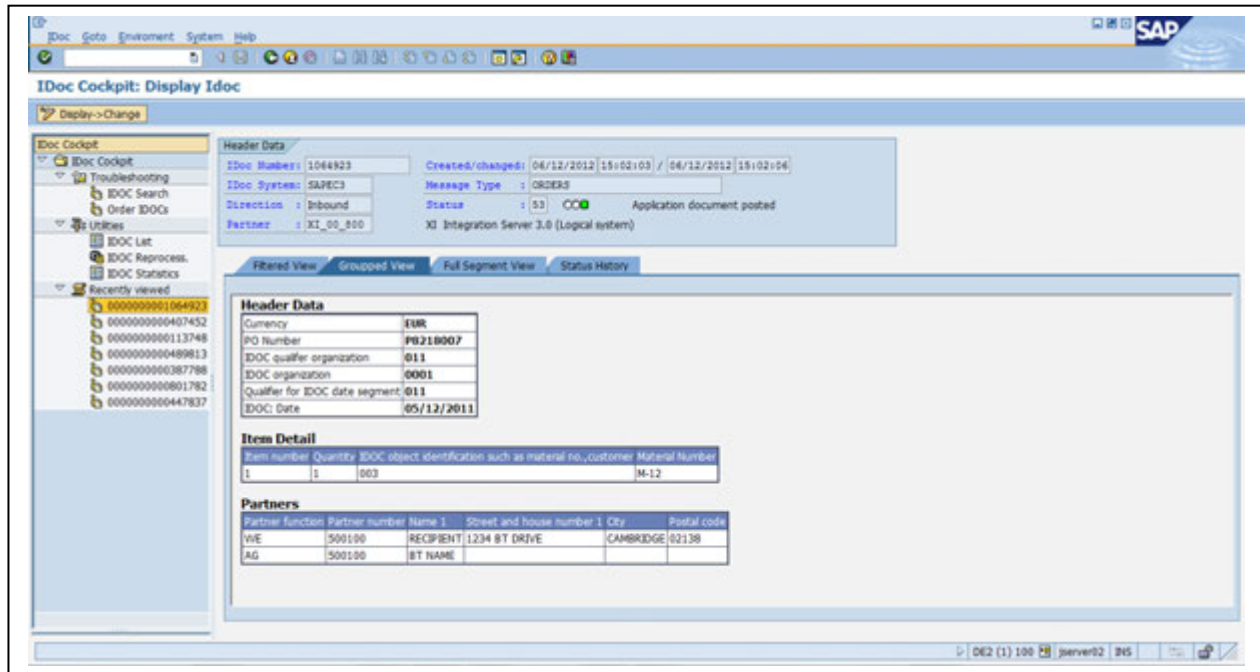


The **Filtered View** lists all of the segments of an IDoc except for the ones that were selected to be hidden.

 Tip – Data that is not important for the person reviewing the IDoc should be hidden to give a simplified, more process focused view of the data.

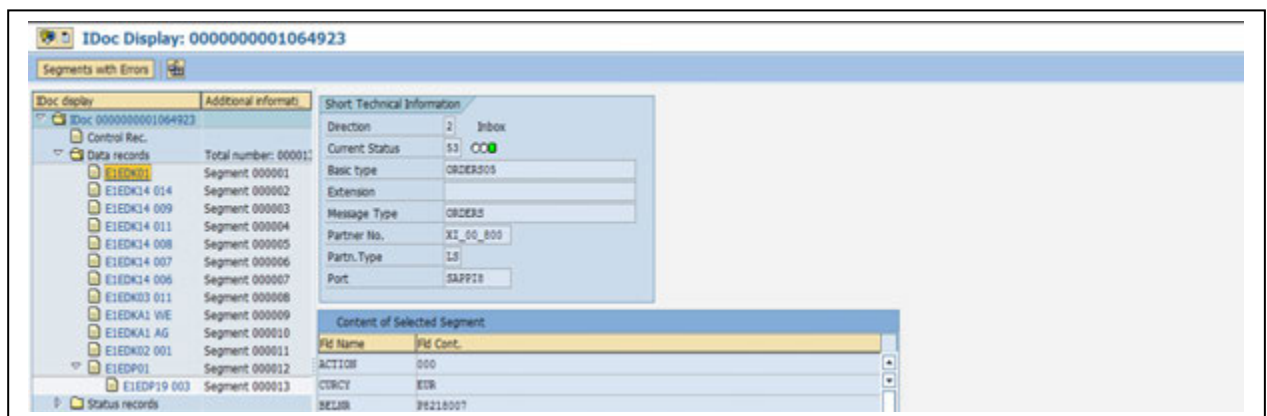


The **Grouped View** presents the IDoc data in a Tabular form with Custom Description, Groupings and Hiding unimportant data. This view represents the set up that was done in the Full Segment View.

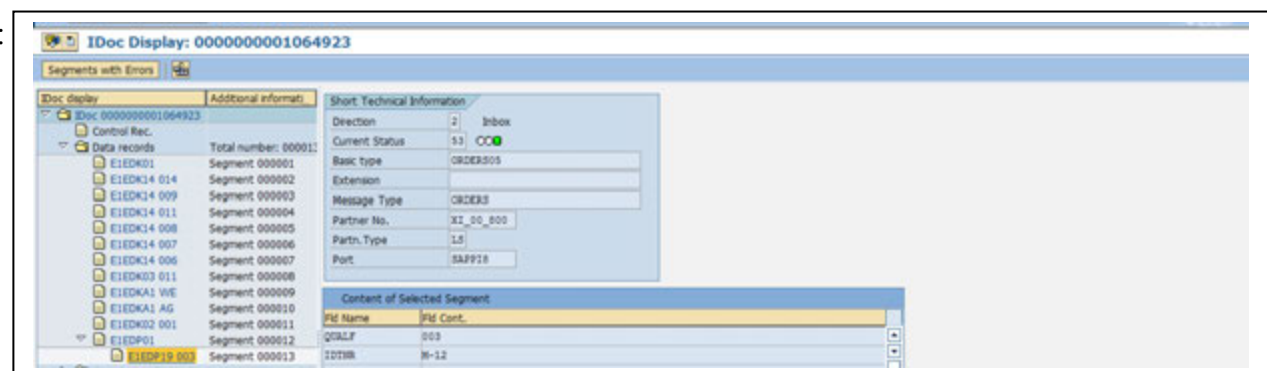


Note – For Comparison purposes, here is how standard SAP displays this same IDoc data. Note there are no descriptions and you would have to drill into every level with a knowledge of mapping and qualifiers to understand this data.

PO Number:



Material Number:



V. Learn more about the JCI Suite of Applications

To find out more about the solutions discussed in this Solution Overview or any of the JCI Suite, please visit Joint Consulting Inc. at www.jcsap.com